

# CERTIFICATE OF LOCATION OF GOVERNMENT CORNER

NORTHEAST Corner of Section 34, Township 108N, Range 39W

5th Principal Meridian, State of Minnesota, County of MURRAY

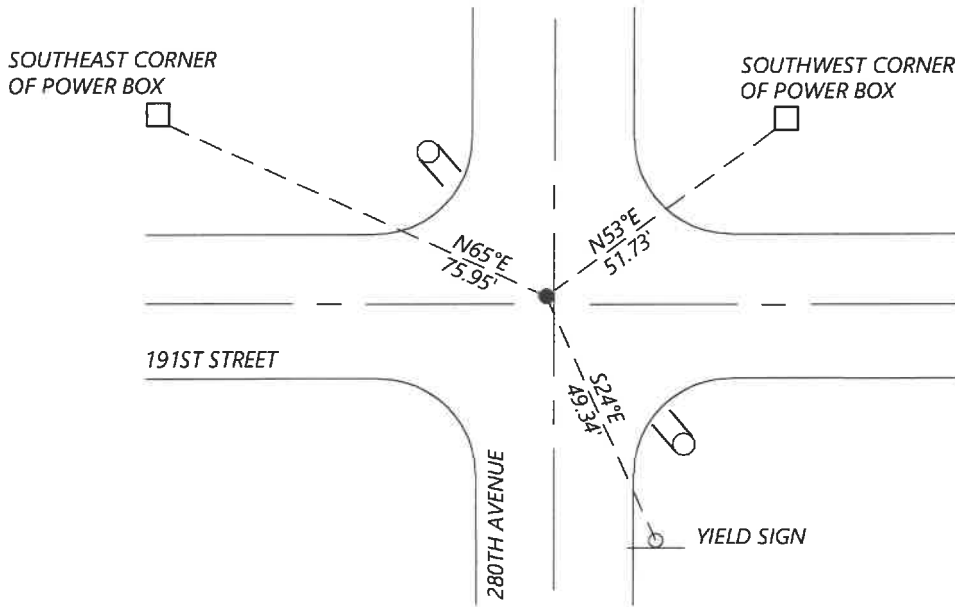
At the corner location shown on the sketch:

On 8/27/2020 found a NO. 4 REBAR WITH YELLOW CAP "LS 12967" DOWN 0.2FT  
DATE

left monument as found       lowered monument       removed monument (explain)

On \_\_\_\_\_ placed a \_\_\_\_\_  
DATE

### SKETCH OF REFERENCE TIES



N.T.S.

Statement of evidence for this corner location is on back of this page.

I hereby certify that this document was researched and prepared by me or under my direct supervision and that I am a licensed Land Surveyor under the laws of the State of Minnesota.

Signature [Signature]  
Date 6/17/2021 License No. 45874

Title:

- Land Surveyor       Professional Engineer
- County Surveyor       County Engineer

OFFICE OF THE COUNTY RECORDER

County of Murray

I hereby certify that this document was filed in the Co.

Recorder's office at \_\_\_\_\_ M. on the \_\_\_\_\_ day of \_\_\_\_\_ A.D. 20 \_\_\_\_\_

County Recorder Karen Brown

by JUN 22 2021, Deputy

DOCUMENT NO. \_\_\_\_\_

**Statement of Evidence:**

Northeast Corner of Section 34, Township 108 North, Range 39 West, 5th Principal Meridian, Murray County, Minnesota.

*GLO - JULY, 1861*

*UNDATED - SURVEY RECORD FOR SECTION 35 DOES NOT SHOW THE ORIGINAL GOV'T CORNER WAS FOUND. A DISTANCE OF 2637.7 IS SHOWN TO THE N1/4 CORNER AND 2652.0 IS SHOWN TO THE W1/4 CORNER.*

*UNDATED - SURVEY RECORD FOR SECTION 26 DOES NOT SHOW THE ORIGINAL GOV'T CORNER WAS FOUND. A DISTANCE OF 2652.0 IS SHOWN TO THE W1/4 CORNER.*

*UNDATED - SURVEY RECORD FOR SECTION 34 DOES NOT SHOW THE ORIGINAL GOV'T CORNER WAS FOUND. A DISTANCE OF 2674.5 IS SHOWN TO THE N1/4 CORNER.*

*SEPT. 23, 1980 - CORNER CERTIFICATE BY LS 12967 SHOWS THAT HE FOUND A STONE WITH WOOD HUB AT THE CORNER AND PLACED A 1/2" REBAR AND CAP #12967 OVER THE STONE.*

*11/13/2008 - CORNER CERTIFICATE BY PERRY ZIESKE SHOWS THAT HE EXCAVATED AND FOUND NOTHING. PLACED 1" IRON PIPE WITH CAP #23008 AT CENTER OF INTERSECTION.*

*AUGUST 8, 2016 - HWY DEPT RECORDS SHOW A FOUND IRON PIN WITH CAP #12967. COORDINATES N 200472.45 E 569340.55.*

*SEPTEMBER 2020 - WESTWOOD PROFESSIONAL SERVICES SEARCHED AND FOUND AN IRON WITH CAP #12967 PER 1980 CORNER CERTIFICATE. NO TIES FROM 1980 CORNER CERTIFICATE WERE FOUND. COORDINATES FIT WITH 2016 HWY DEPT DATA. ACCEPTED FOUND MONUMENT AND SET NEW TIES.*

Analysis of the recovered data, field evidence and survey measurements, indicates that the monument found is the correct perpetuation of this corner. For additional information concerning this corner please contact Westwood Professional Services.